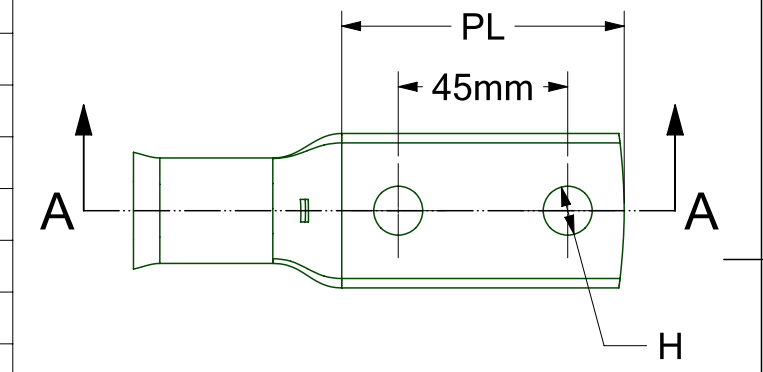
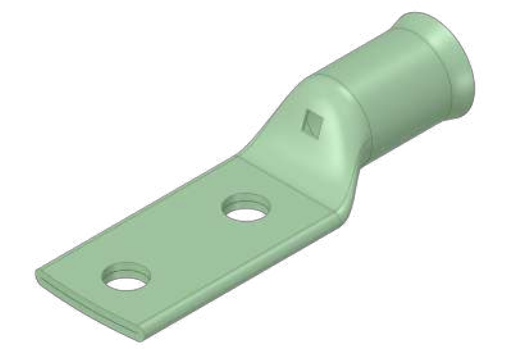


REVISION HISTORY	
1	Original Concept
2	Dimension Table Update
3	Part Numbers added to table
4	Part number table update
5	Part number table update
6	Part number table update

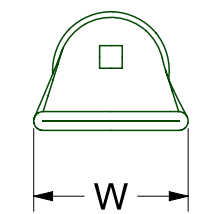
PART NO.	H (mm)	W (mm)	PL (mm)	B (mm)
TC2H-45C-10-8	9.0	14.0	75.0	4.4
TC2H-45C-10-10	11.0	16.0	75.0	4.4
TC2H-45C-10-12	13.0	18.0	75.0	4.4
TC2H-45C-16-8	9.0	14.0	75.0	5.6
TC2H-45C-16-10	11.0	18.0	75.0	5.6
TC2H-45C-16-12	13.0	18.0	75.0	5.6
TC2H-45C-25-8	9.0	14.0	75.0	7.0
TC2H-45C-25-10	11.0	16.0	75.0	7.0
TC2H-45C-25-12	13.0	18.0	75.0	7.0
TC2H-45C-35-8	9.0	15.5	75.0	8.2
TC2H-45C-35-10	11.0	16.0	75.0	8.2
TC2H-45C-35-12	13.0	18.0	75.0	8.2
TC2H-45C-50-8	9.0	17.2	75.0	9.5
TC2H-45C-50-10	11.0	18.0	75.0	9.5
TC2H-45C-50-12	13.0	18.0	75.0	9.5
TC2H-45C-70-8	9.0	21.2	75.0	11.5
TC2H-45C-70-10	11.0	21.2	75.0	11.5
TC2H-45C-70-12	13.0	21.2	75.0	11.5
TC2H-45C-95-8	9.0	24.3	75.0	13.5
TC2H-45C-95-10	11.0	24.3	75.0	13.5
TC2H-45C-95-12	13.0	24.3	75.0	13.5

PART NO.	H (mm)	W (mm)	PL (mm)	B (mm)
TC2H-45C-120-8	9.0	27.2	75.0	15.0
TC2H-45C-120-10	11.0	27.2	75.0	15.0
TC2H-45C-120-12	13.0	27.2	75.0	15.0
TC2H-45C-120-16	16.5	27.2	75.0	15.0
TC2H-45C-150-8	9.0	30.0	75.0	16.5
TC2H-45C-150-10	11.0	30.0	75.0	16.5
TC2H-45C-150-12	13.0	30.0	75.0	16.5
TC2H-45C-150-16	16.5	30.0	75.0	16.5
TC2H-45C-185-8	9.0	33.5	75.0	18.5
TC2H-45C-185-10	11.0	33.5	75.0	18.5
TC2H-45C-185-12	13.0	33.5	75.0	18.5
TC2H-45C-185-16	16.5	33.5	75.0	18.5
TC2H-45C-240-8	8.5	37.7	75.0	21.0
TC2H-45C-240-10	11.0	37.7	75.0	21.0
TC2H-45C-240-12	13.0	37.7	75.0	21.0
TC2H-45C-240-16	16.5	37.7	75.0	21.0
TC2H-45C-300-8	8.5	41.0	75.0	23.0
TC2H-45C-300-10	11.0	41.0	75.0	23.0
TC2H-45C-300-12	13.0	41.0	75.0	23.0
TC2H-45C-300-16	16.5	41.0	75.0	23.0

PART NO.	H (mm)	W (mm)	PL (mm)	B (mm)
TC2H-45C-400-8	8.5	47.3	75.0	27.0
TC2H-45C-400-10	11.0	47.3	75.0	27.0
TC2H-45C-400-12	13.0	47.3	75.0	27.0
TC2H-45C-400-16	16.5	47.3	75.0	27.0
TC2H-45C-500-8	9.0	55.0	75.0	30.0
TC2H-45C-500-10	11.0	55.0	75.0	30.0
TC2H-45C-500-12	13.0	55.0	75.0	30.0
TC2H-45C-500-16	16.5	55.0	75.0	30.0
TC2H-45C-630-6	6.5	63.0	75.0	33.8
TC2H-45C-630-8	8.5	63.0	75.0	33.8
TC2H-45C-630-10	11.0	63.0	75.0	33.8
TC2H-45C-630-12	13.0	63.0	75.0	33.8
TC2H-45C-630-16	16.5	63.0	75.0	33.8
TC2H-45C-800-8	8.5	70.0	75.0	38.0
TC2H-45C-800-10	11.0	70.0	75.0	38.0
TC2H-45C-800-12	13.0	70.0	75.0	38.0
TC2H-45C-800-16	16.5	70.0	75.0	38.0



SECTION A-A



UOS - LINEAR TOLERANCE PERMISSABLE DEVIATIONS FOR SIZE RANGE:
Tolerances according to DIN ISO 2768 (V)

DIMS IN MM	0.5 to 3	>3 to 6	>6 to 30	>30 to 120	>120 to 400	>400 to 1000	>1000 to 2000	>2000 to 4000
	±0.5	±1.0	±1.5	±2.5	±4.0	±6.0	±8.0	

TOTAL CONNECTIONS 2009

Total Connections 2009 LTD

www.tc2009.co.uk
sales@tc2009.co.uk
Tel 01249 812 707

Drawing No. TCDR1960

Part No. TC2H-45C-RANGE

Material. CW024A (C106) COPPER

Finish. 5MICRON ELECTRO TIN PLATED

SIZE A3 Date 30/11/2021 Created By: Dan Hewlett REV 6

SCALE 1:2 SHEET 1 of 1